



## WOOD RODGERS, INC. | STRUCTURES

The Structures Team at Wood Rodgers is a versatile group of design specialists providing structural engineering services for buildings, and land development structures. Our staff has served the needs of private development and specialty contractors, as well as, public clients with the state county, city, and transportation authorities. Whether it is the design of a multi-story building, the retrofit of deficient structures in a seismically active region, our solutions always feature state-of-the-art approach and innovation.

Our staff is adept in developing structural projects from conception to final design, as well as providing bidding and construction support. Our experience includes the design, rehabilitation, and seismic retrofit of multi-story buildings, participation in design-build projects, and peer review/performance structural plan checks.

“Mr. Calvillo is knowledgeable and innovative in value engineering and has an intuitive sense in producing cost effective design solutions. Most importantly he listens and is a team player. His engineering expertise is a valuable asset in creating innovative designs and is most evident in the manner he is able to resolve issues that arise during the construction phase.”

—Edwin M. Kado, Architect  
E.M. Kado Associates – AIA, Inc.



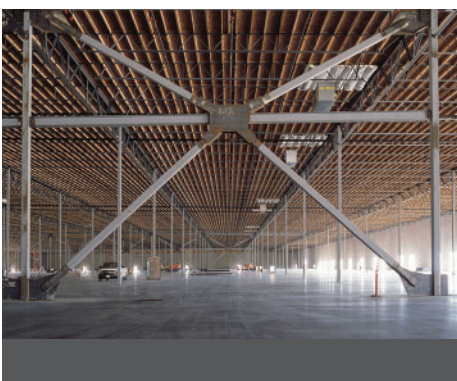
### ST. IGNATIUS - CLASSROOM BUILDING

Sacramento, California

*Complete + Tentative Improvements in Progress*

Wood Rodgers is preparing complete tentative improvements, structural design documents and construction support for this 40,366 sf classroom and school office building. The building consists of tilt-up concrete wall panels with open web steel truss roof hybrid system.

**School Multi-Purpose**



### KENDALL JACKSON/BIAGI BROTHERS WINE DISTRIBUTION CENTER

American Canyon, California

*Complete + Tentative Improvements in Progress*

Wood Rodgers worked closely with the Architect and Contractors to provide economical structural design solutions and responsive construction support for this 650,000 sf manufacturing facility. The warehouse facility consists of precast concrete shear wall panels, (2) five bay interior special concentric braced frames, and an open web steel joists and wood hybrid roof system with a thermoplastic roofing membrane. The precast panels were designed to accommodate architectural features and accommodate cross dock truck traffic and rail spur.

**Industrial**

## DIGNITY HEALTH

Citrus Heights, California

*Complete + Tentative Improvements in Progress*

Wood Rodgers provided structural design services for this state-of-the-art medical office building located in Citrus Heights. The building is a 3 story concrete tilt-up with an interior structural steel frame and concrete filled metal deck floor system. The building features a large architectural steel roof screen and trellis and entry canopy. The structures team supported the project through the design/construction phases and included coordination of all the architectural features.



## Tilt-Up Construction

## WOODSPRING SUITES

Sacramento, California

*Permitting in Progress*

Wood Rodgers is providing Structural Design Services for the WoodSpring Suites Prototype Design located in Sacramento, CA. The project is a 47,382 sf four-level suite extended stay hotel. Scope of work includes value engineering review and preliminary design services to determine structural framing system selection (i.e. roof/floor sections, shear wall locations, duct shaft locations and layout, and slab/foundation requirements). Structural construction support services will be provided.



## Hotel / Hospitality

## VINTAGE SONOMA ASSISTED LIVING

Sonoma, California

*Completed*

This is a two-level, 60,000sf Independent and Alzheimer's project constructed of wood bearing/shear walls with pre-manufactured wood trusses. The facility includes many architectural features including covered walkways and trellises. Our team provided coordination of the structural engineering system including clash prevention with the mechanical, plumbing and electrical systems.



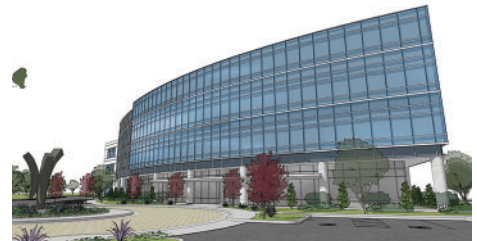
## Assisted Living

## NATOMAS CORPORATE CENTER

Sacramento, California

*In Construction*

Wood Rodgers provided structural design services for this Class A office building located in Sacramento. The building is a 3-story, concrete tilt-up with an interior structural steel frame and concrete-filled metal deck floor system. The building is supported on cast-in place piles and features a large architectural curtain wall and entry canopy. The building was modeled with 3D structural analysis software providing a complete analysis of all the gravity and lateral members. Analysis results were then exported into Revit to create the final design documents.



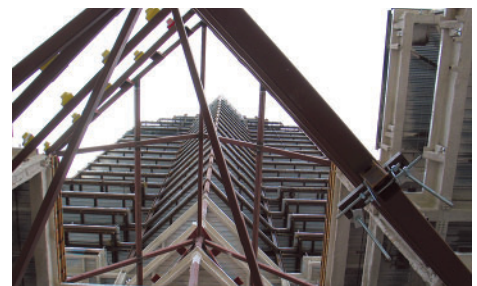
## Commercial

## 500 CAPITOL MALL

Sacramento, California

*Tower Complete + Tentative Improvements in Progress*

This 26 level structure implemented the design and checking procedures to prepare the plans and specification for the eccentric braced and moment framing supported by drilled pier and cap foundations. Non-linear analysis structural modeling was performed to qualify the lateral resisting frame system. During the early stages of design, the structural design team investigated structural framing options in order to minimize cost, detailing, fabrication and erection requirements.



## High-Rise Construction



For more information contact:

**GERARDO CALVILLO, PE, SE**

Tel: (916) 715-6786

[gcalvillo@woodrogers.com](mailto:gcalvillo@woodrogers.com)

**CAROL MARTIN, PE**

Tel: (916) 341-7446

[cmartin@woodrogers.com](mailto:cmartin@woodrogers.com)

**DWAYNE SLAVIN, PE, SE**

Tel: (916) 341-7713

[dslavin@woodrogers.com](mailto:dslavin@woodrogers.com)